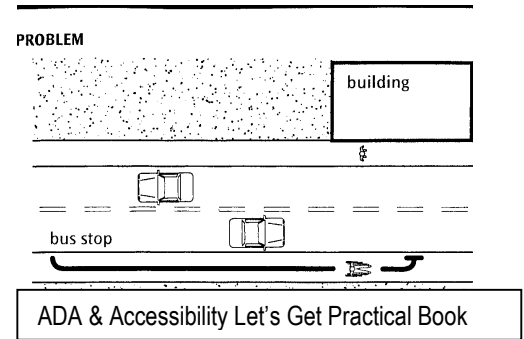




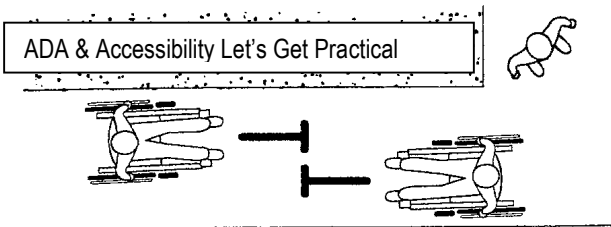
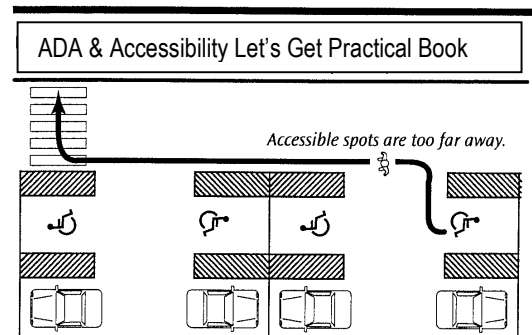
Proving that ABILITY depends on Spirit,  
Determination, & Refusal to Give Up.

## Top 10 Common ADA Facilities Mistakes

1. Route from street, bus stop & crosswalks to building without curb ramps, walks, or signed crosswalks

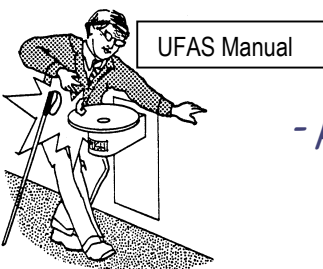
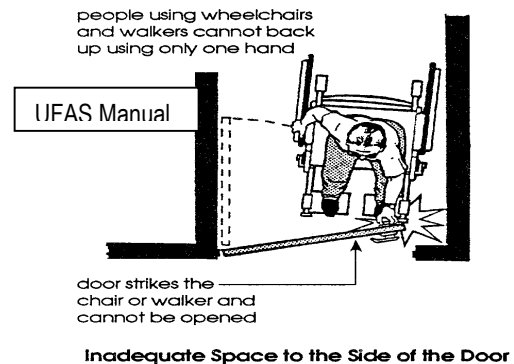


2. Accessible parking locations are designed without considering access aisles - slope in all directions - Closest to entrance - signage and direct route to building



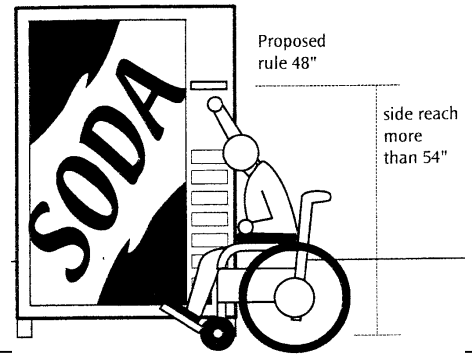
3. Access routes throughout facility too narrow - obstructed - loose throw rugs present - overhead protruding objects, not level, slip resistant

4. Doors w/o 32" clearance - levered handles - push/pull is >5lbs - opening side swing clearance



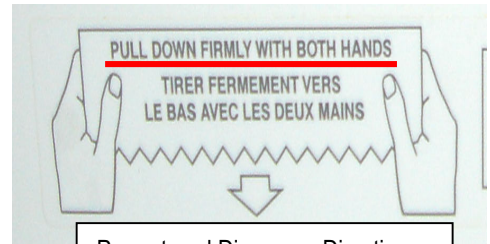
5. Drinking fountains - style - location - heights - controls - protection

6. Height - Reach ranges incorrect - both height and depth ranges too high or too far away

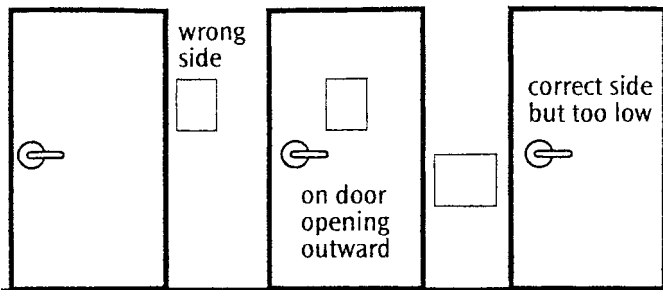


ADA & Accessibility Let's Get Practical Book

7. Controls - requiring two hands instead of required one hand control, tight grasping, pinching & twisting of the wrist.



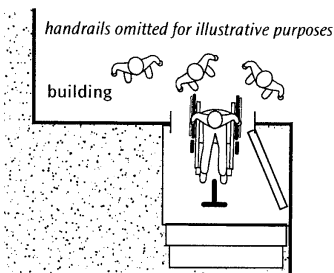
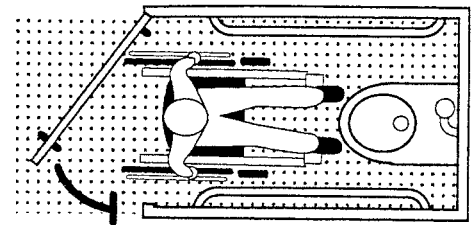
Paper towel Dispenser Directions



ADA & Accessibility Let's get Practical

8. Directional signage missing - Contrast not sufficient and or glare exist - not well located-- Braille not included at door entrances, elevators, etc.

9. Restrooms size - accessible stall sizes and design not correct- location of fixtures wrong and style of fixtures not meet ADA.



10. Safety issues all too often forgotten such as area rescue assistance, emergency exits and safety evacuation chairs



ADA & Accessibility Let's Get Practical Book